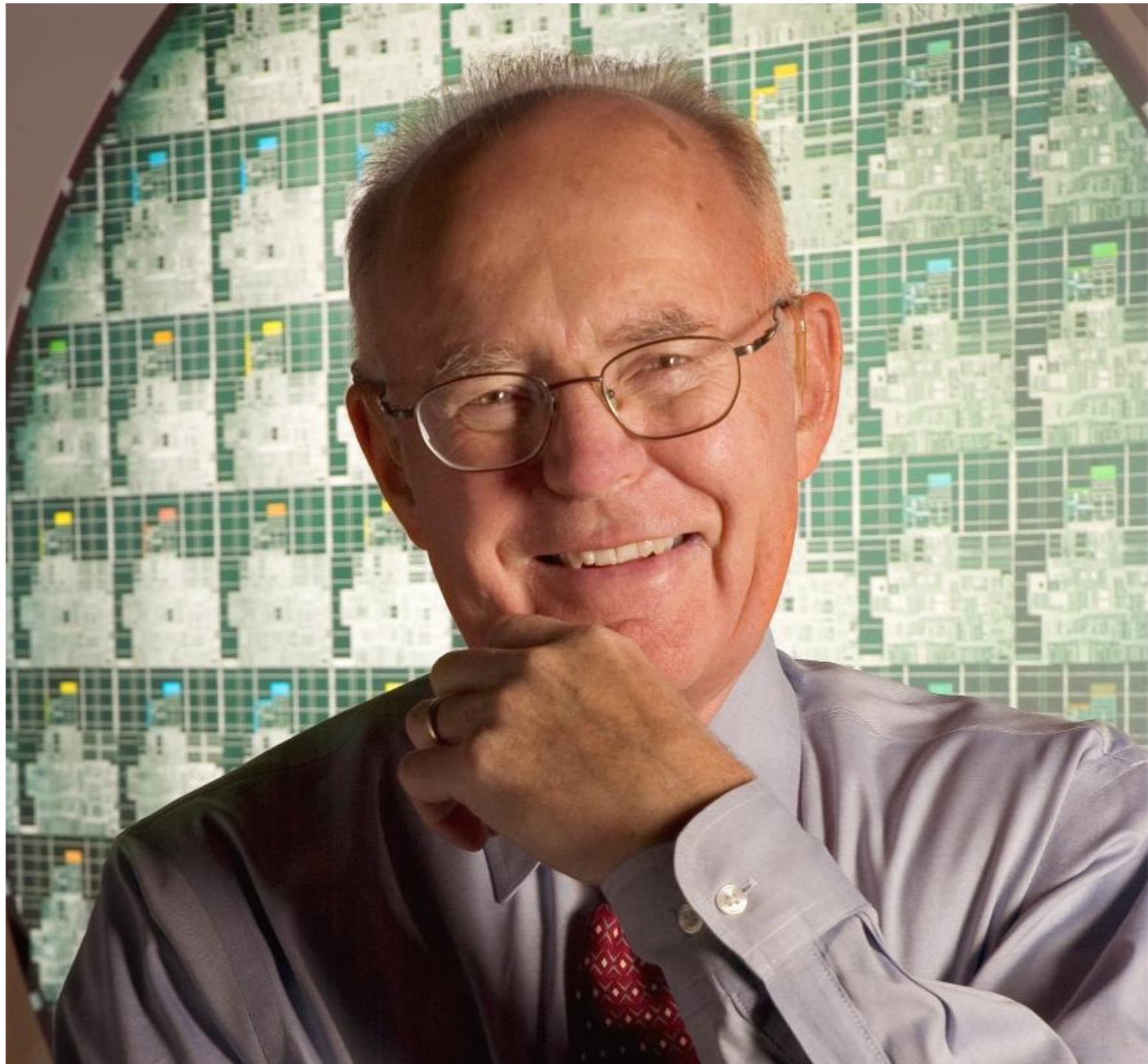
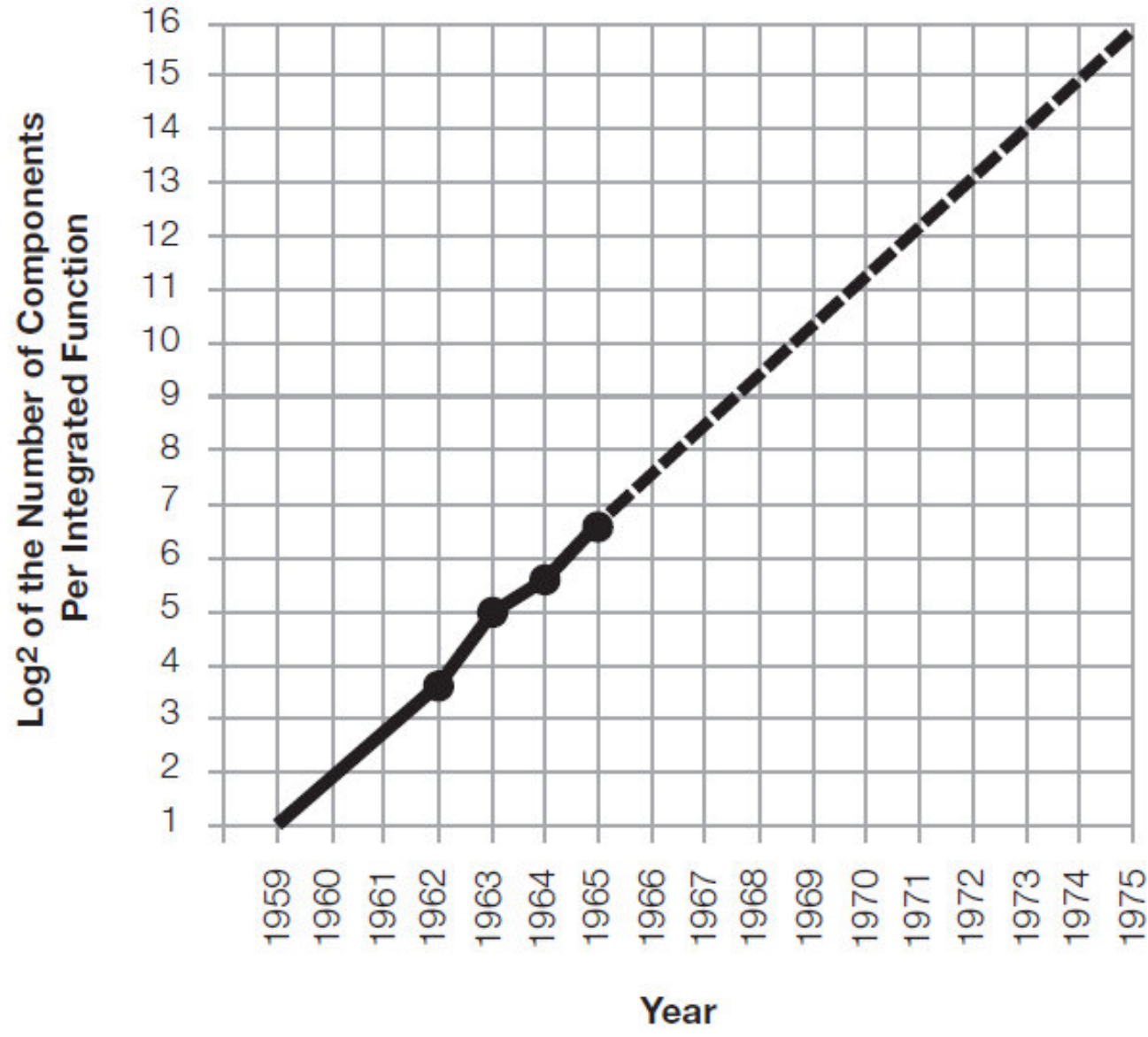


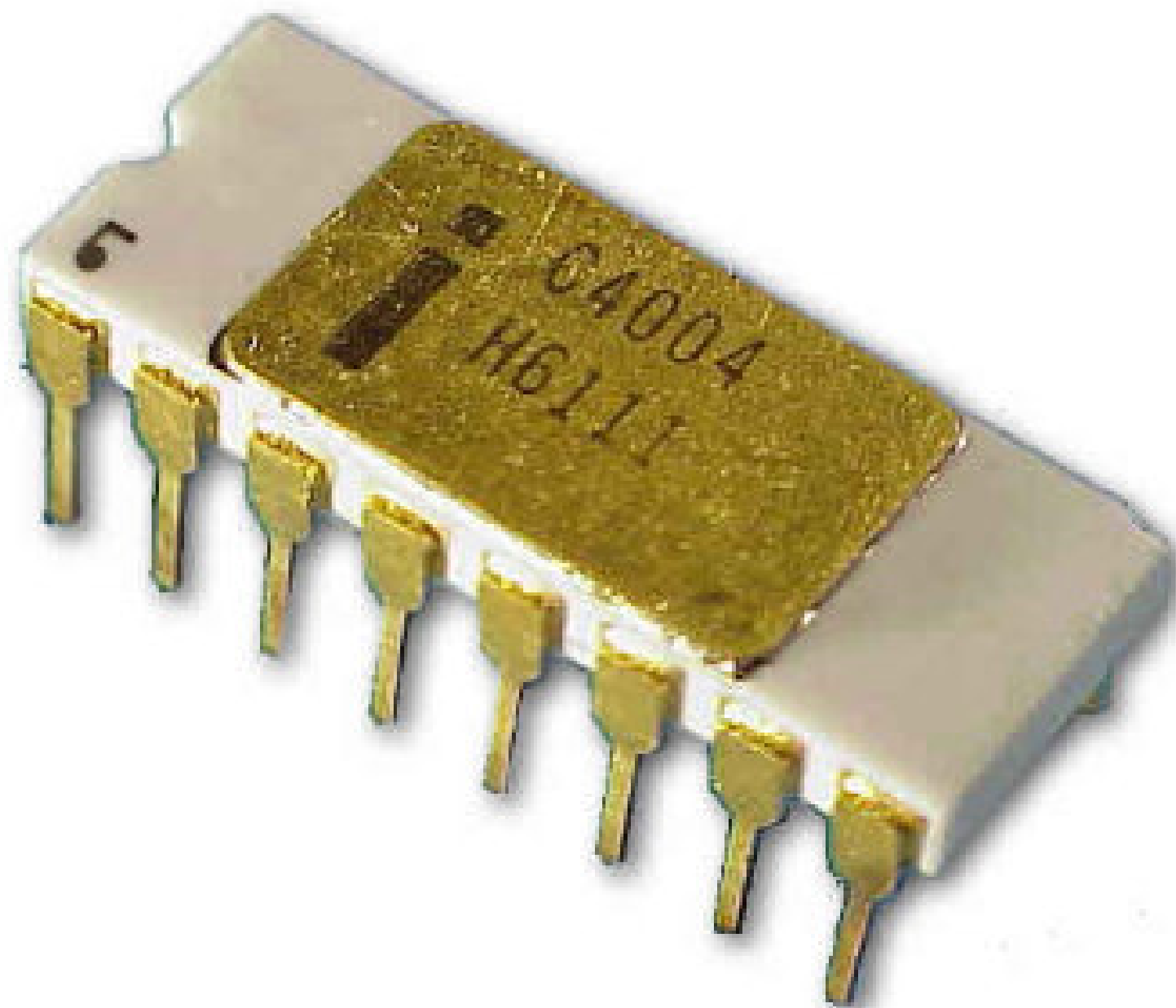


Industry 4.0: OPC UA bridging IT and automation

October 7, 2014, OPC & MES Event, Peter Seeberg, © Softing Industrial Automation

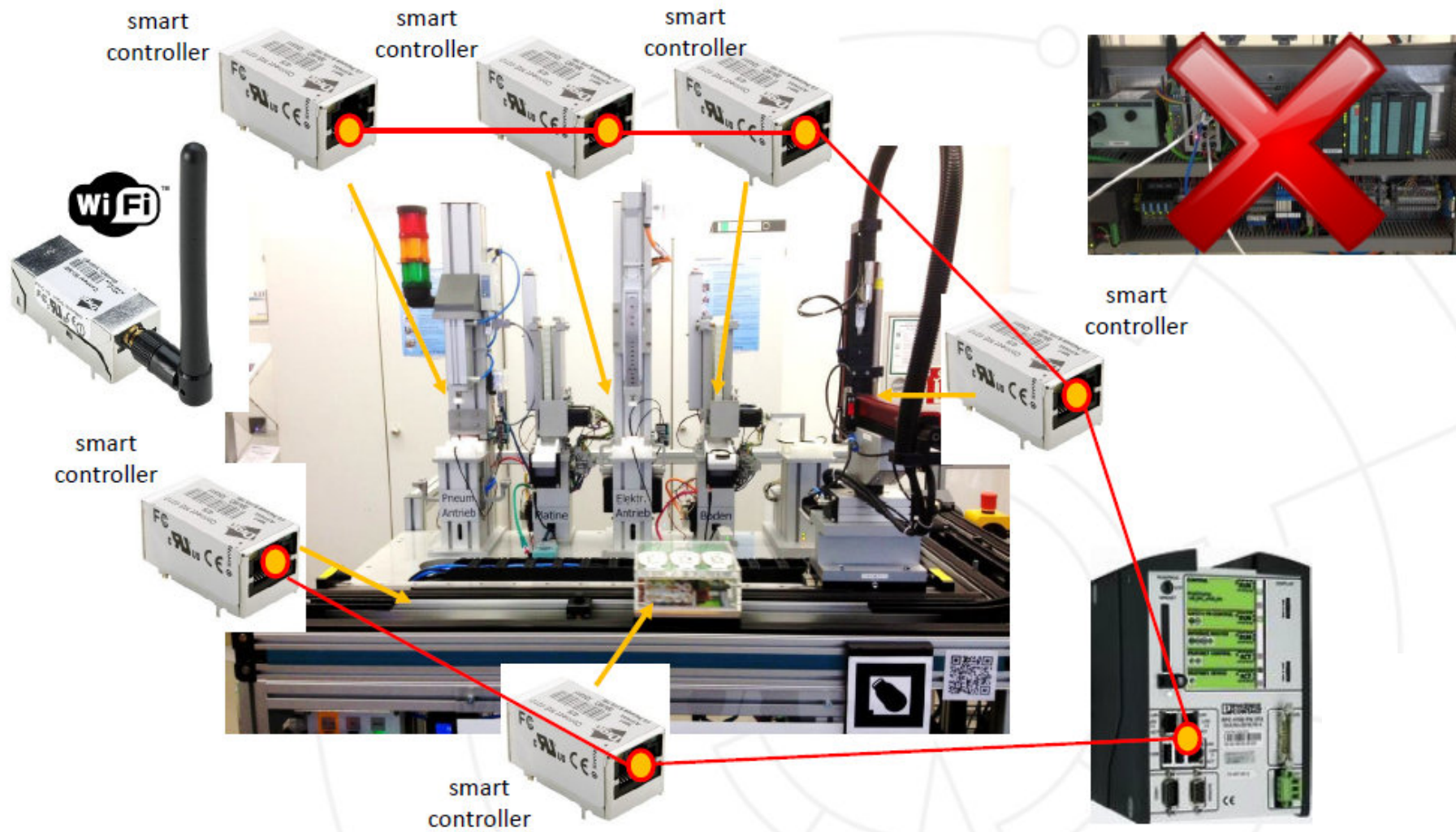






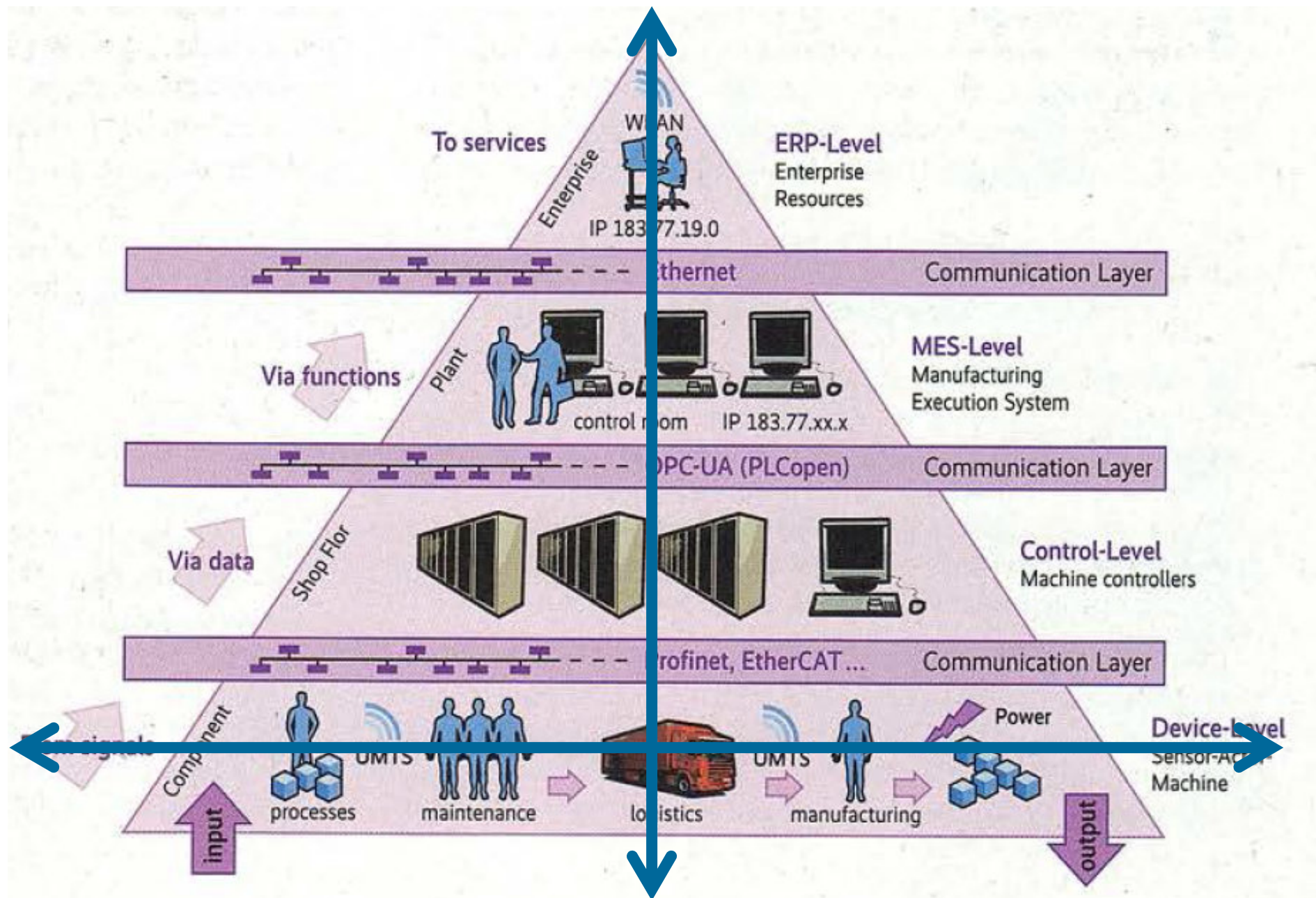


Smart Machine Module

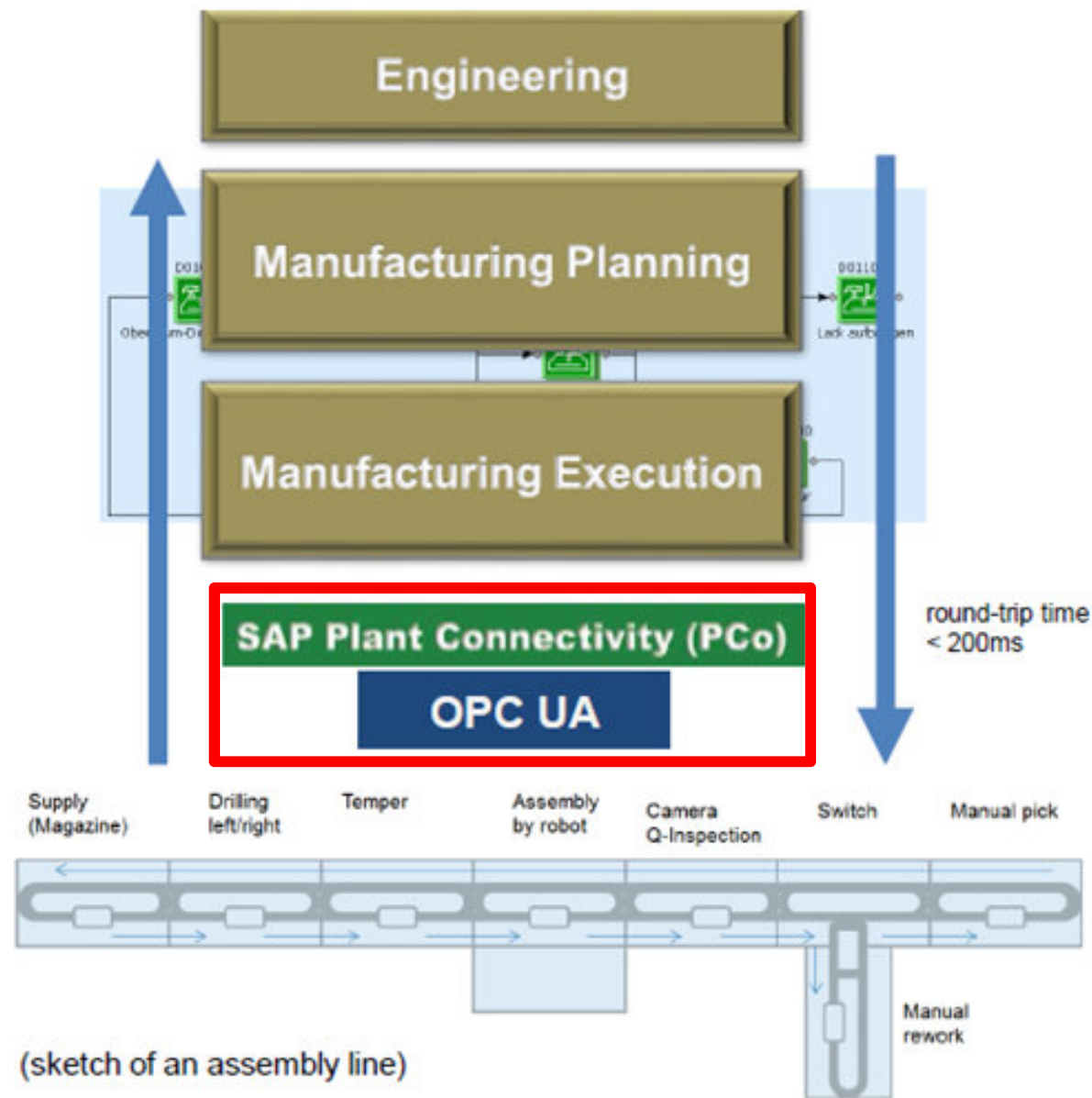


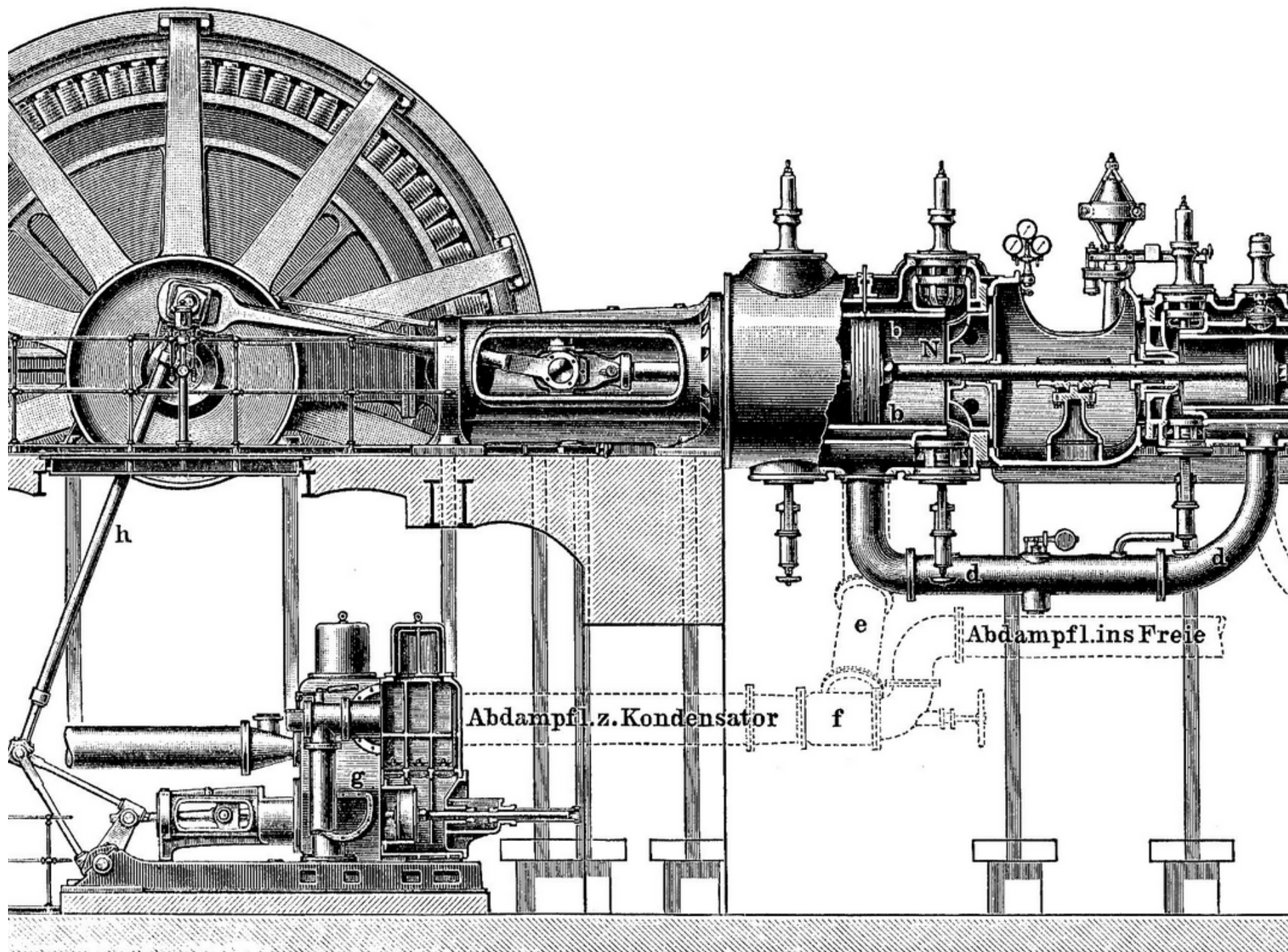
Recommendations for implementing the strategic initiative INDUSTRIE 4.0

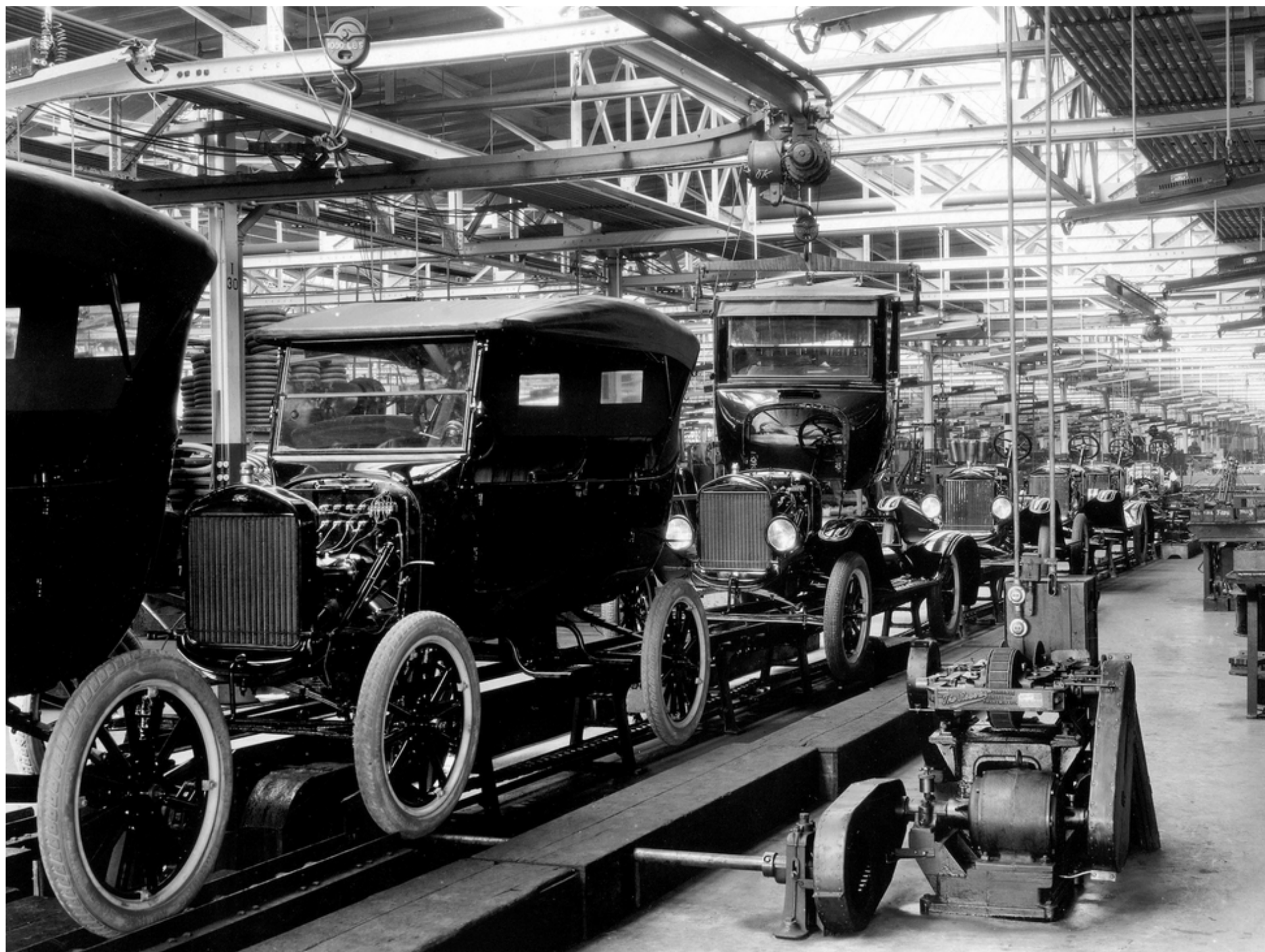
Final report of the Industrie 4.0 Working Group



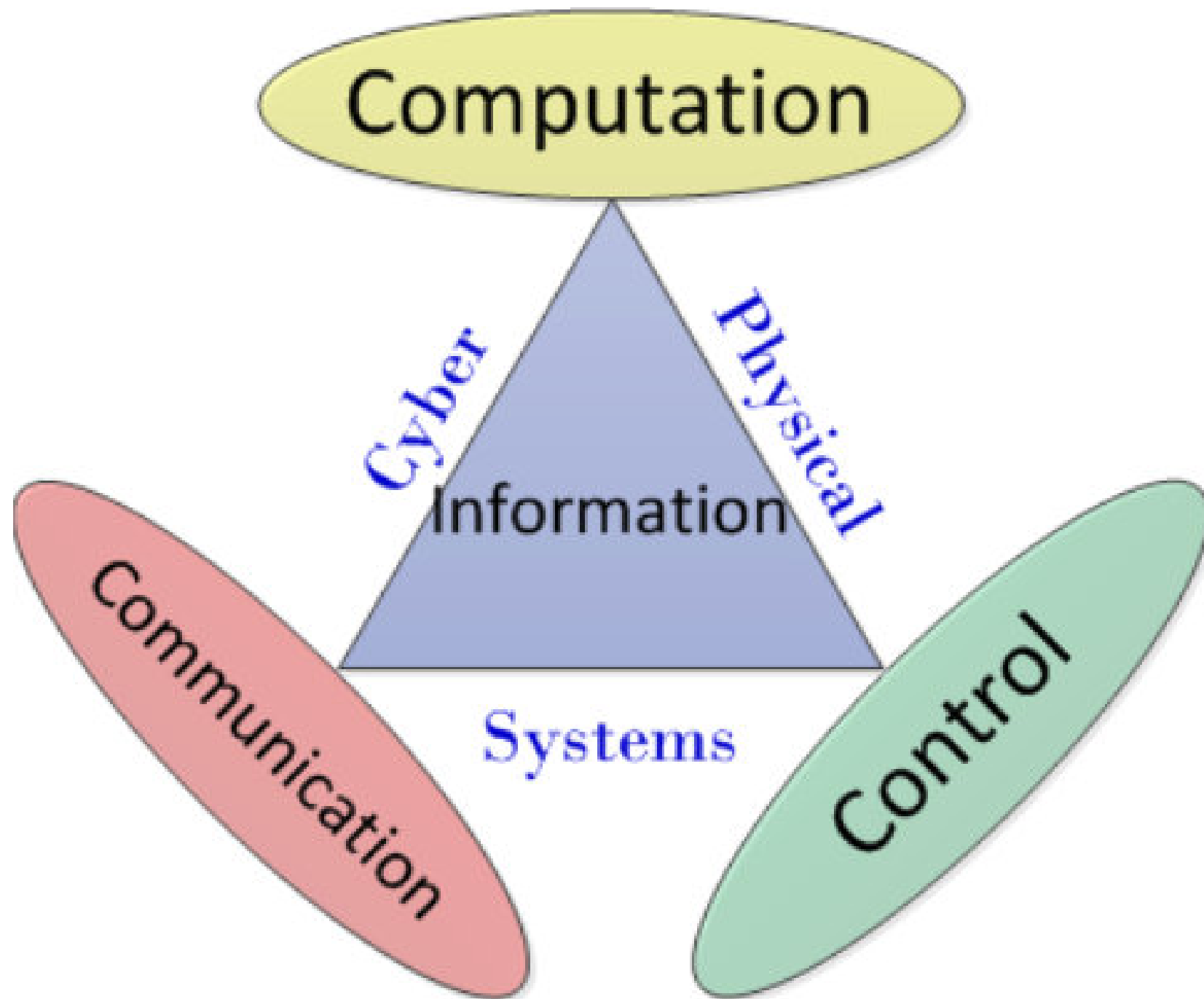
Manufacturing Process Control



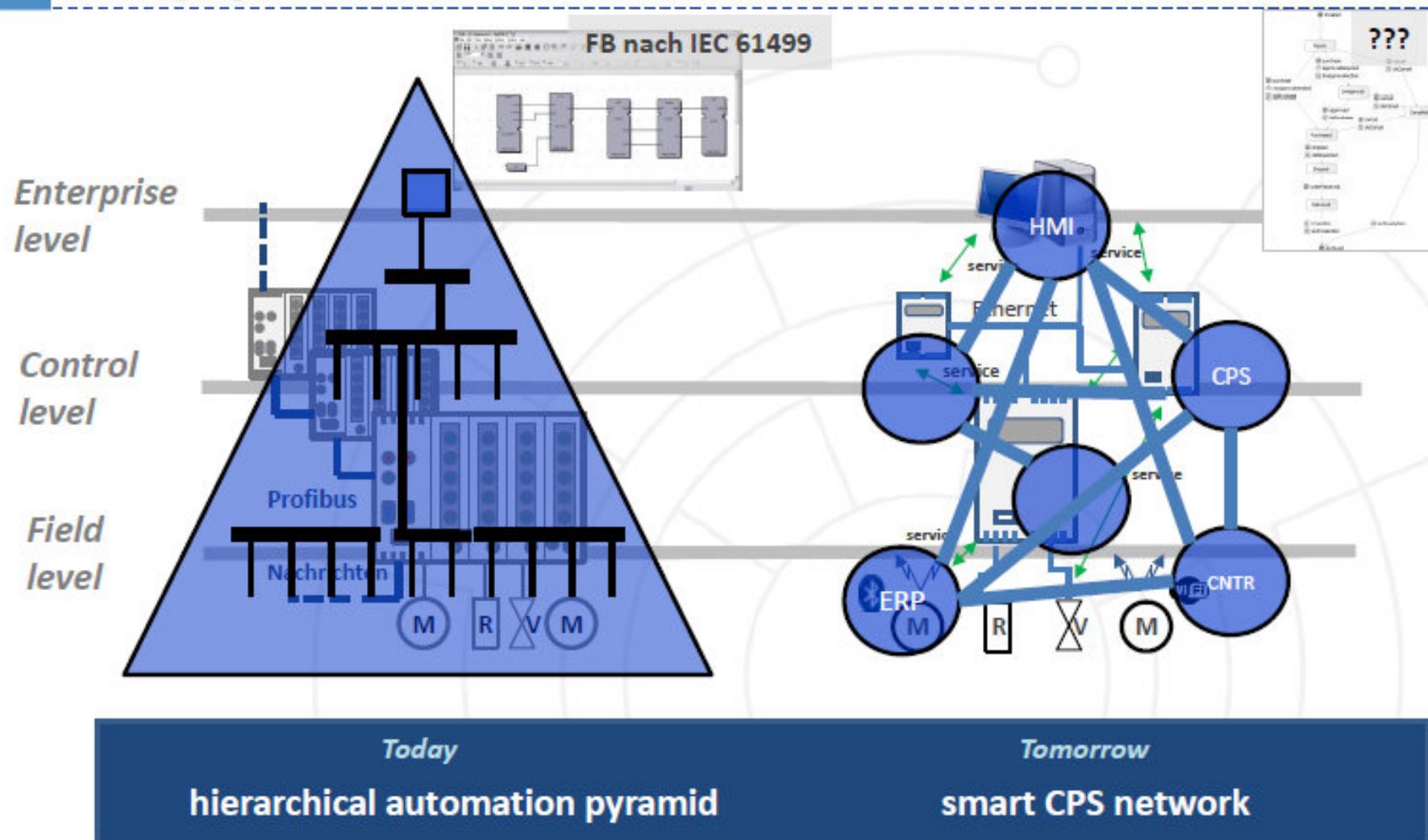




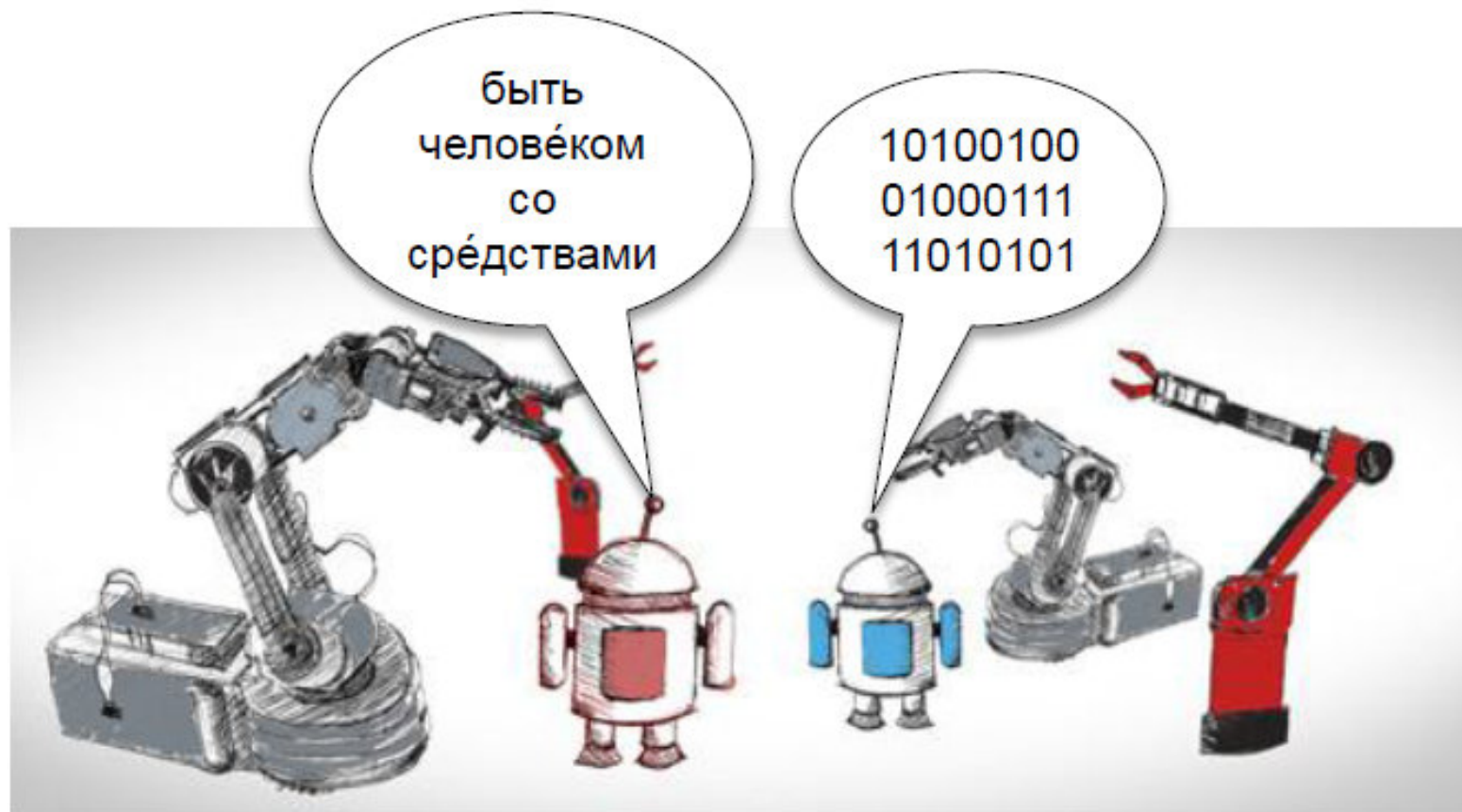




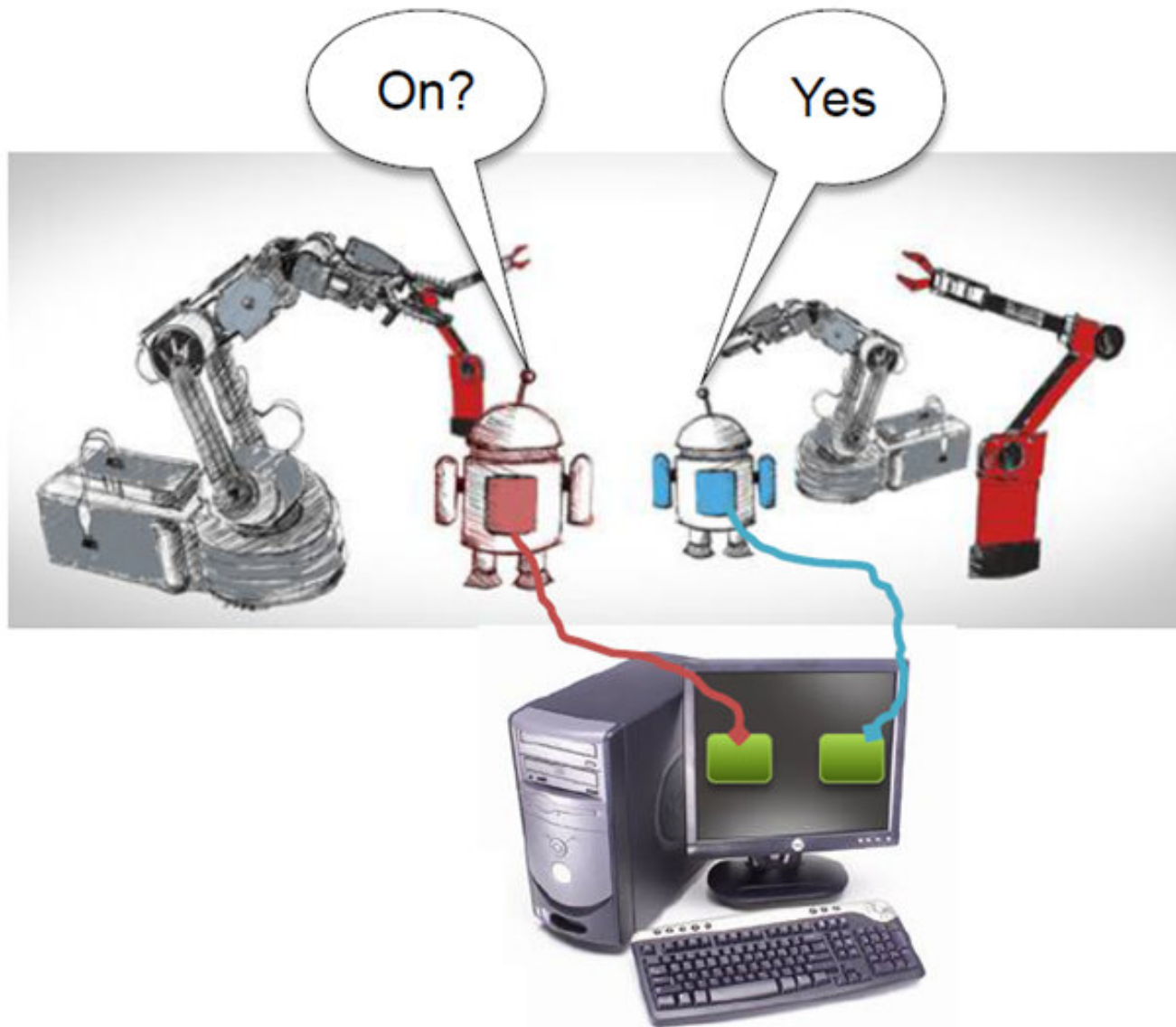
Changing control architecture



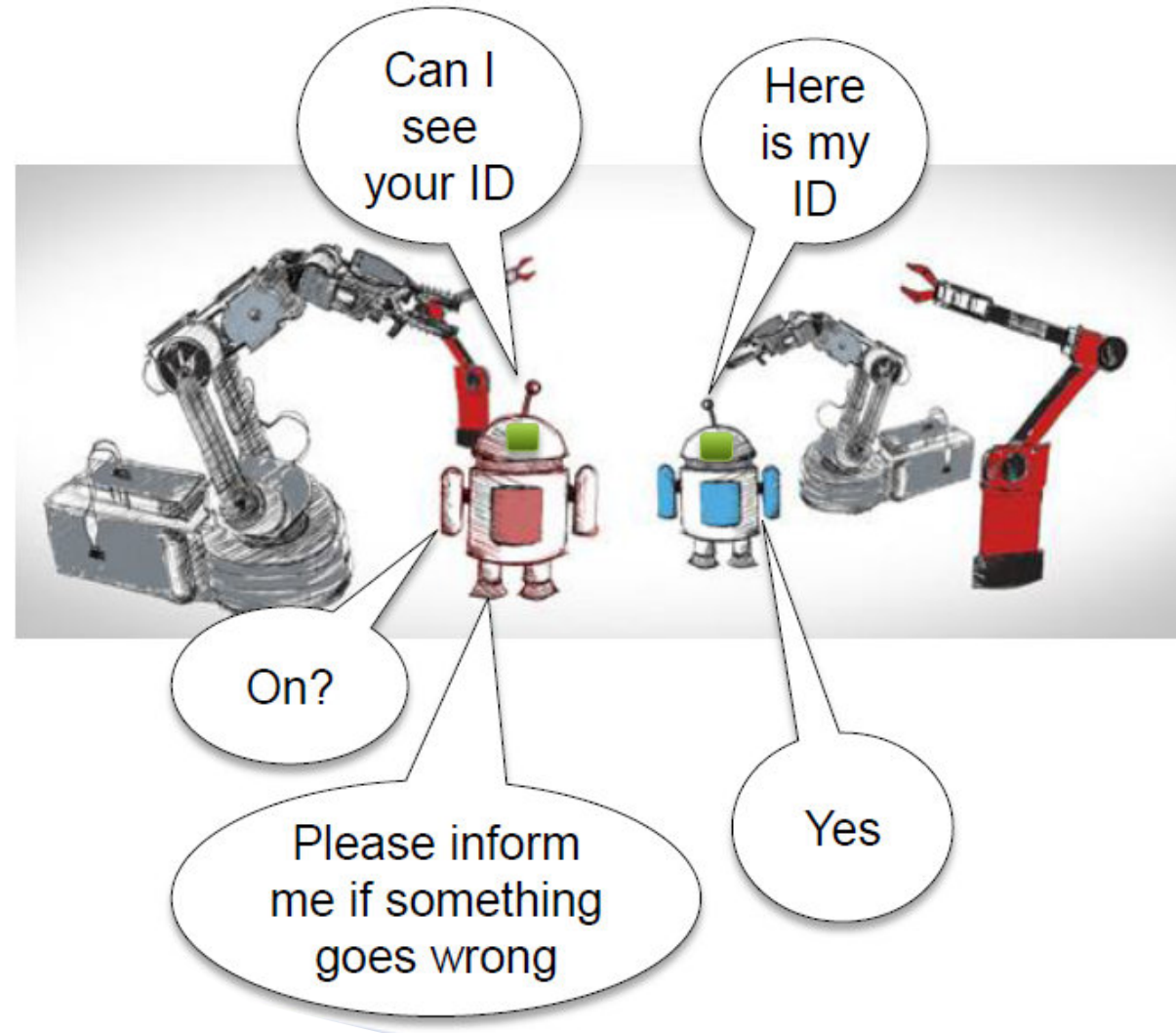
Before OPC



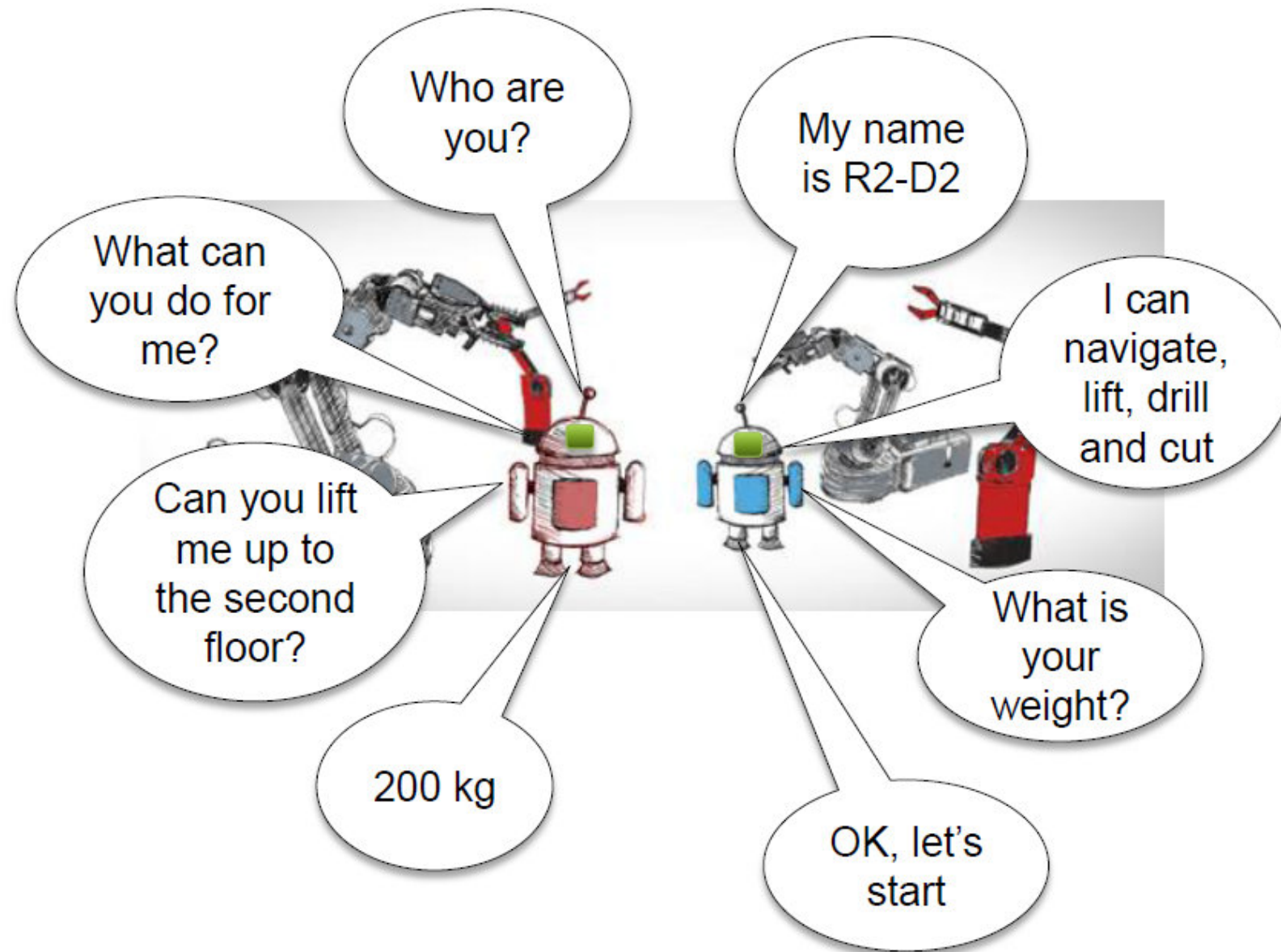
With Classic OPC

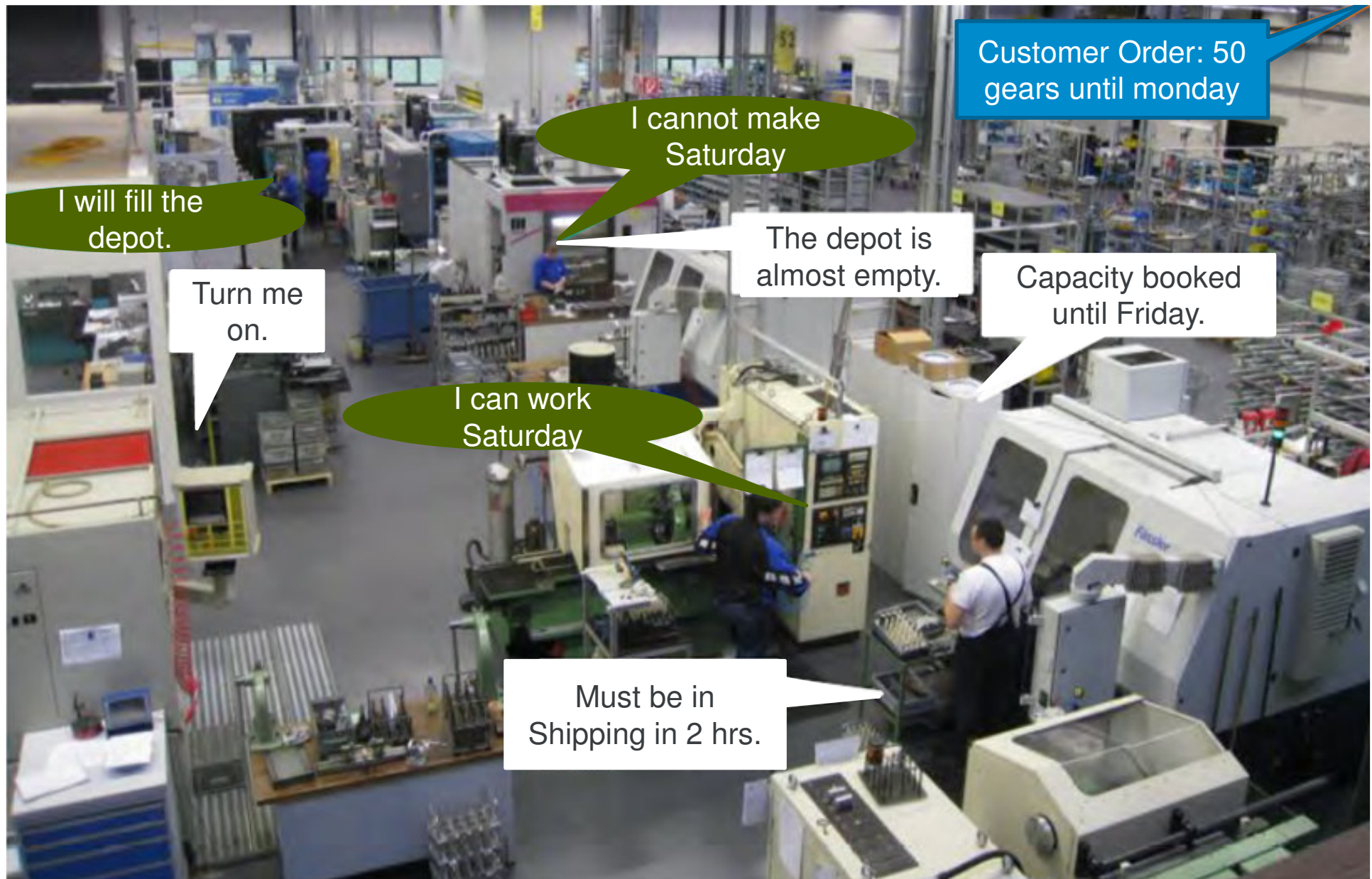


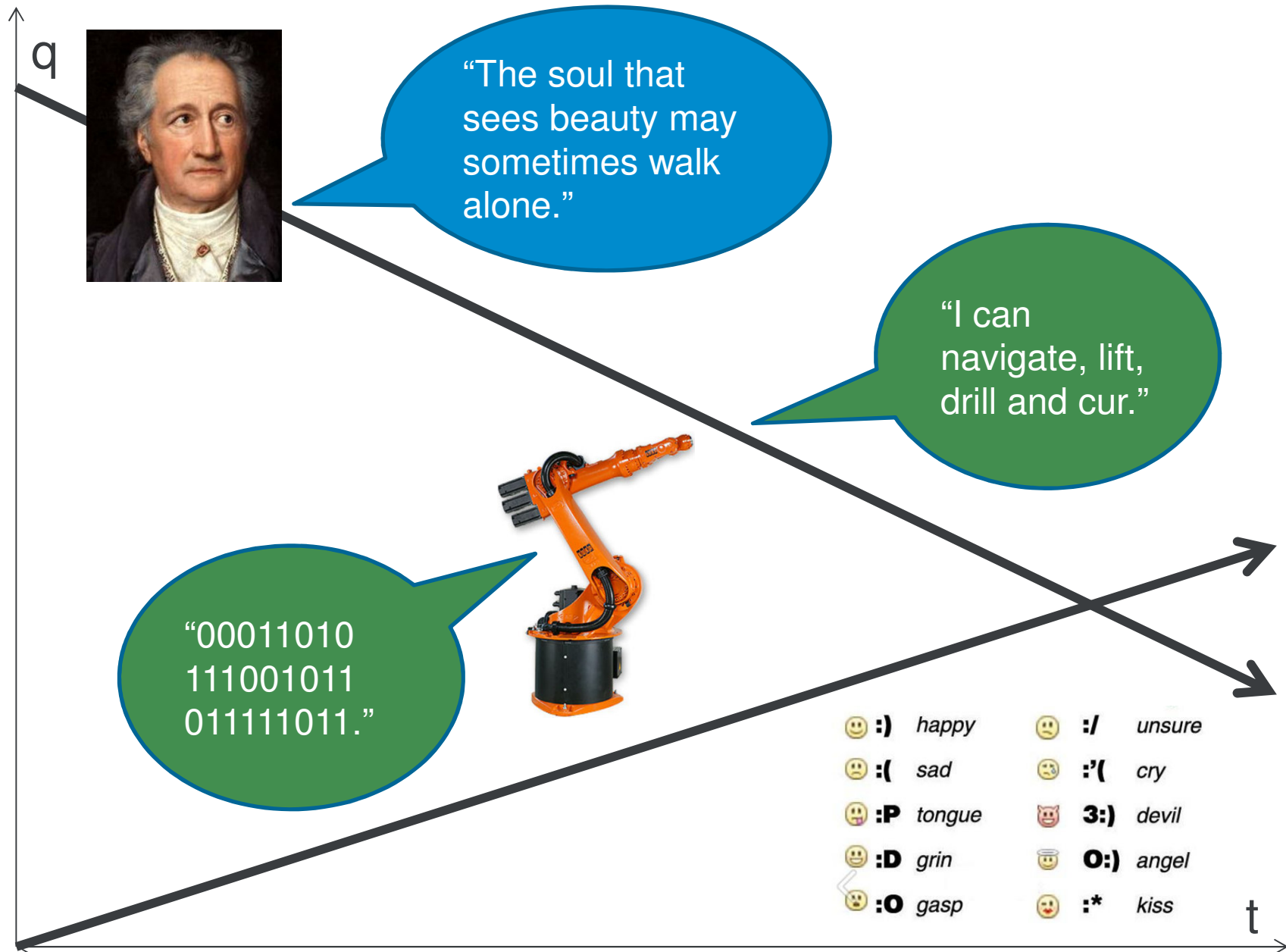
With OPC Unified Architecture



With OPC UA Information Models

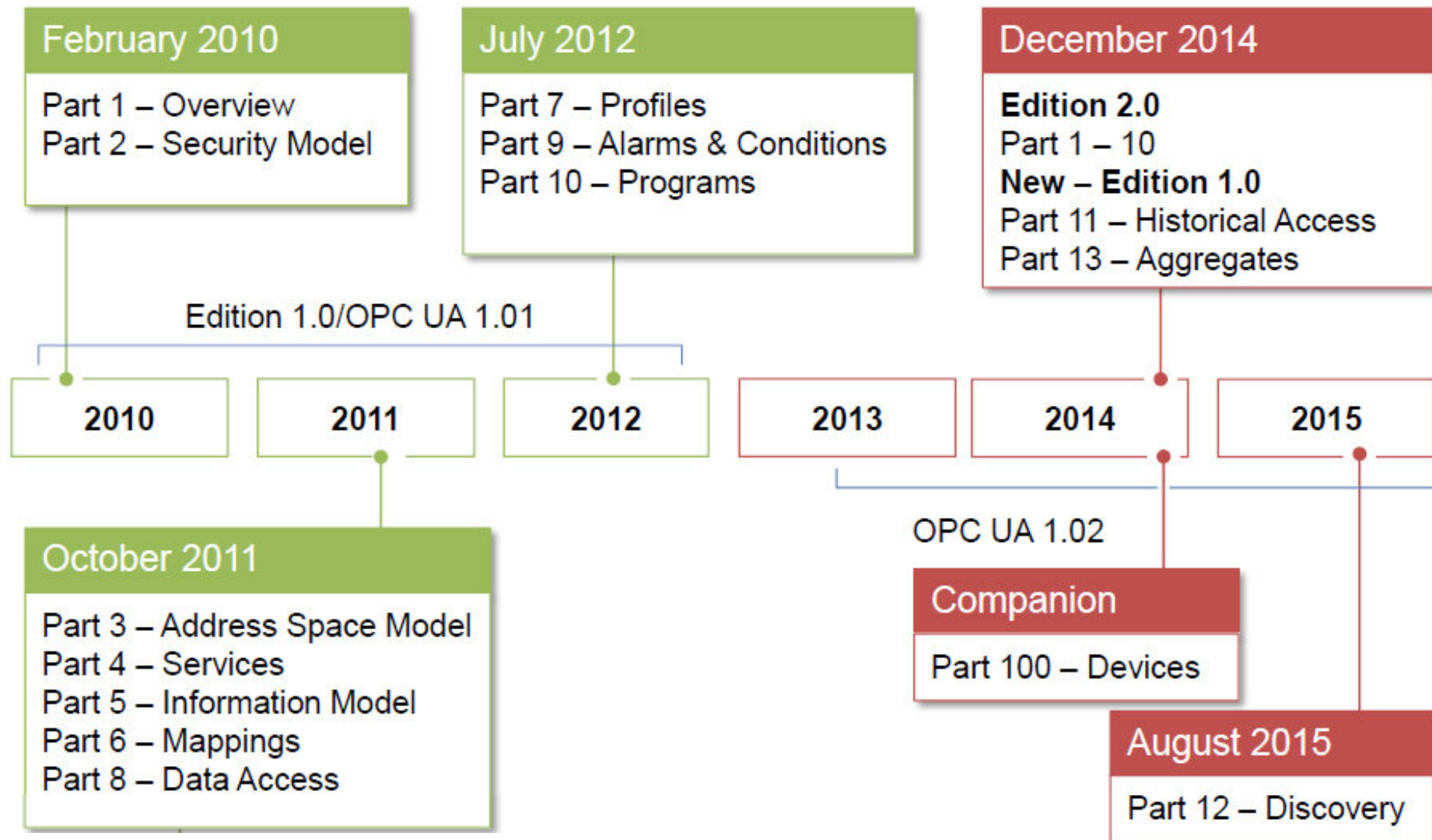






© Seeberg

IEC 62541



Implicitly Secure

Authentication of Clients and Servers

- ▶ Achieved by using X.509 certificates ("application instance certificates")



Authentication of users

- ▶ Achieved by using username/password, X.509 certificate, or WS-SecurityToken



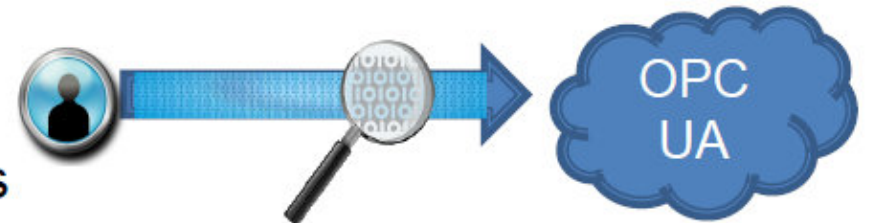
Integrity of their communications

- ▶ Digital signatures based on X.509 certificates



Confidentiality of their communications

- ▶ Encryption based on symmetric cryptography, key negotiation includes authentication based on X.509



Platform Independence

Scalability



Cloud



Server
Cluster



Server



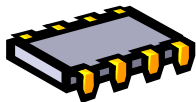
Desktop
PC



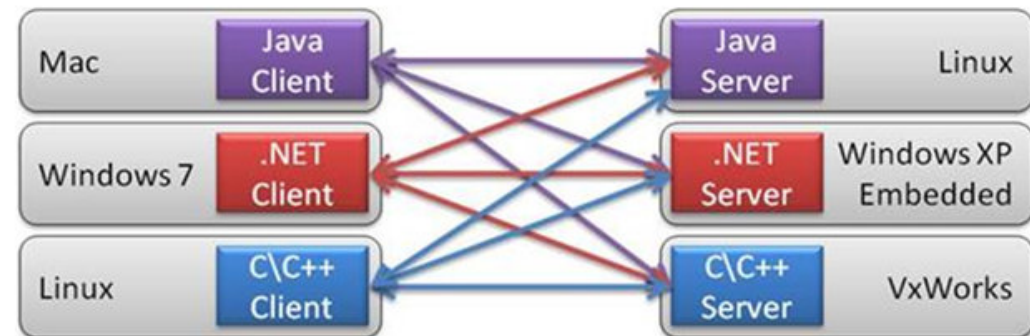
Portables



Controllers

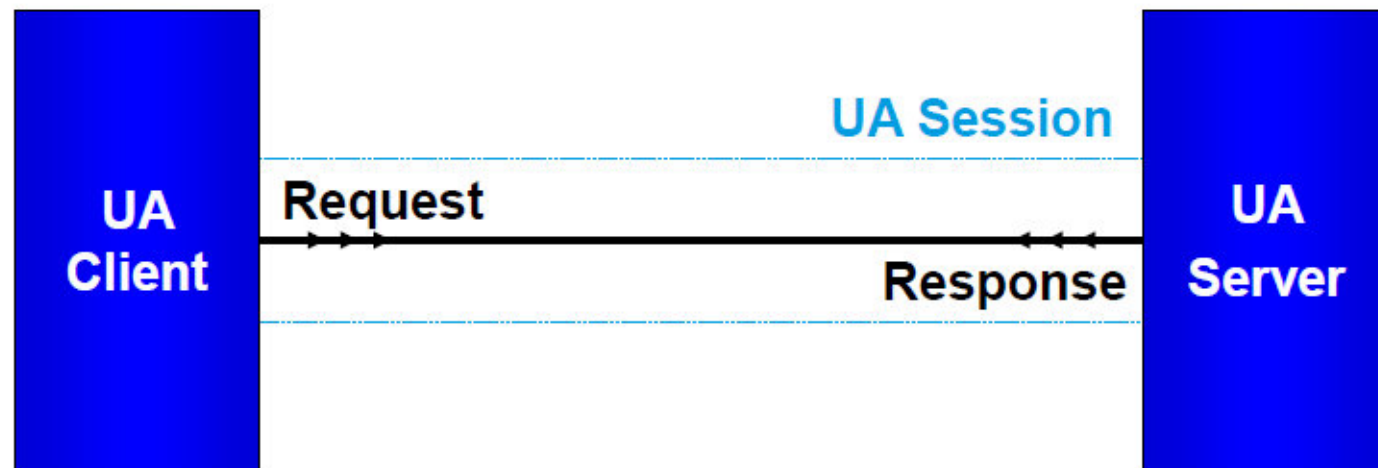


Embedded
Systems

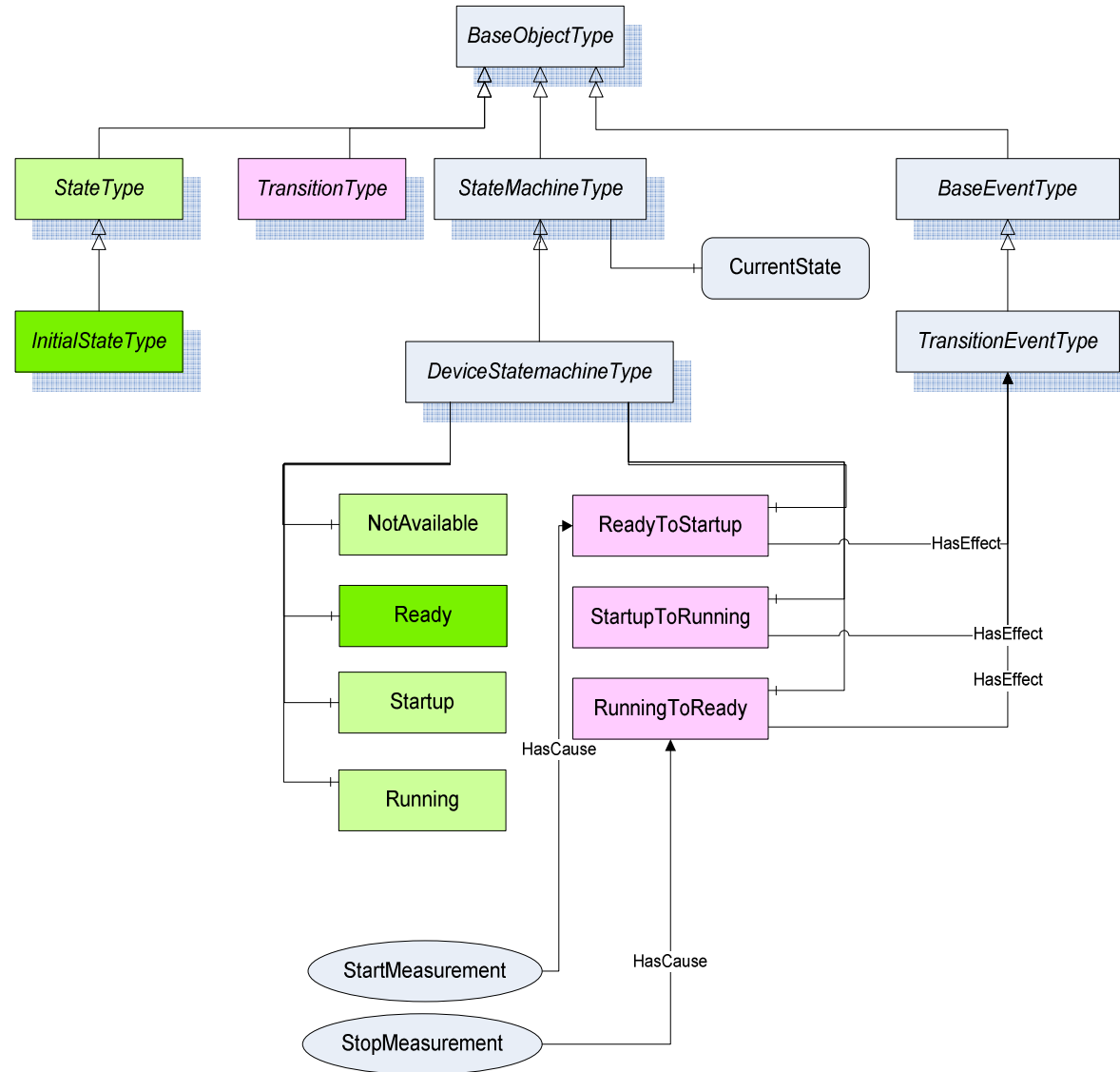


Communication Reliability

- ▶ OPC UA recovers from communication loss
- ▶ OPC UA ensures robust and reliable communication
 - Keep-alive monitoring
 - Buffering of data and acknowledgements
 - Fast recovery in case of communication errors
 - Redundancy concepts



Information Modelling



Compliance

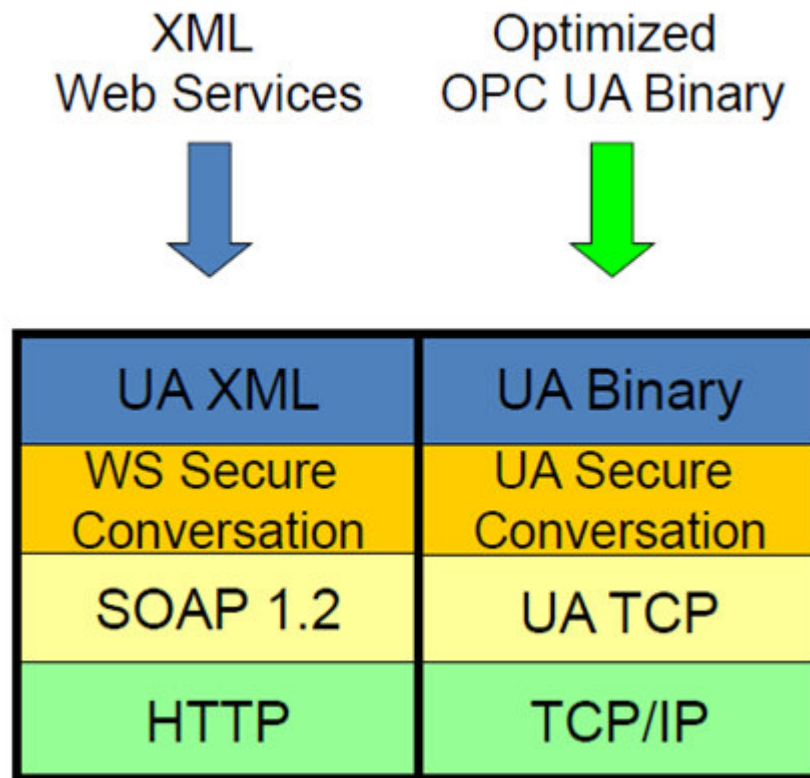
OPC Interoperability Workshop, Asia

June 18 - 20, 2014, Tokyo, Japan



Transport Protocol Bindings

- ▶ OPC UA has been architected for speed and network performance



The new smartfactory demonstrator and its partners

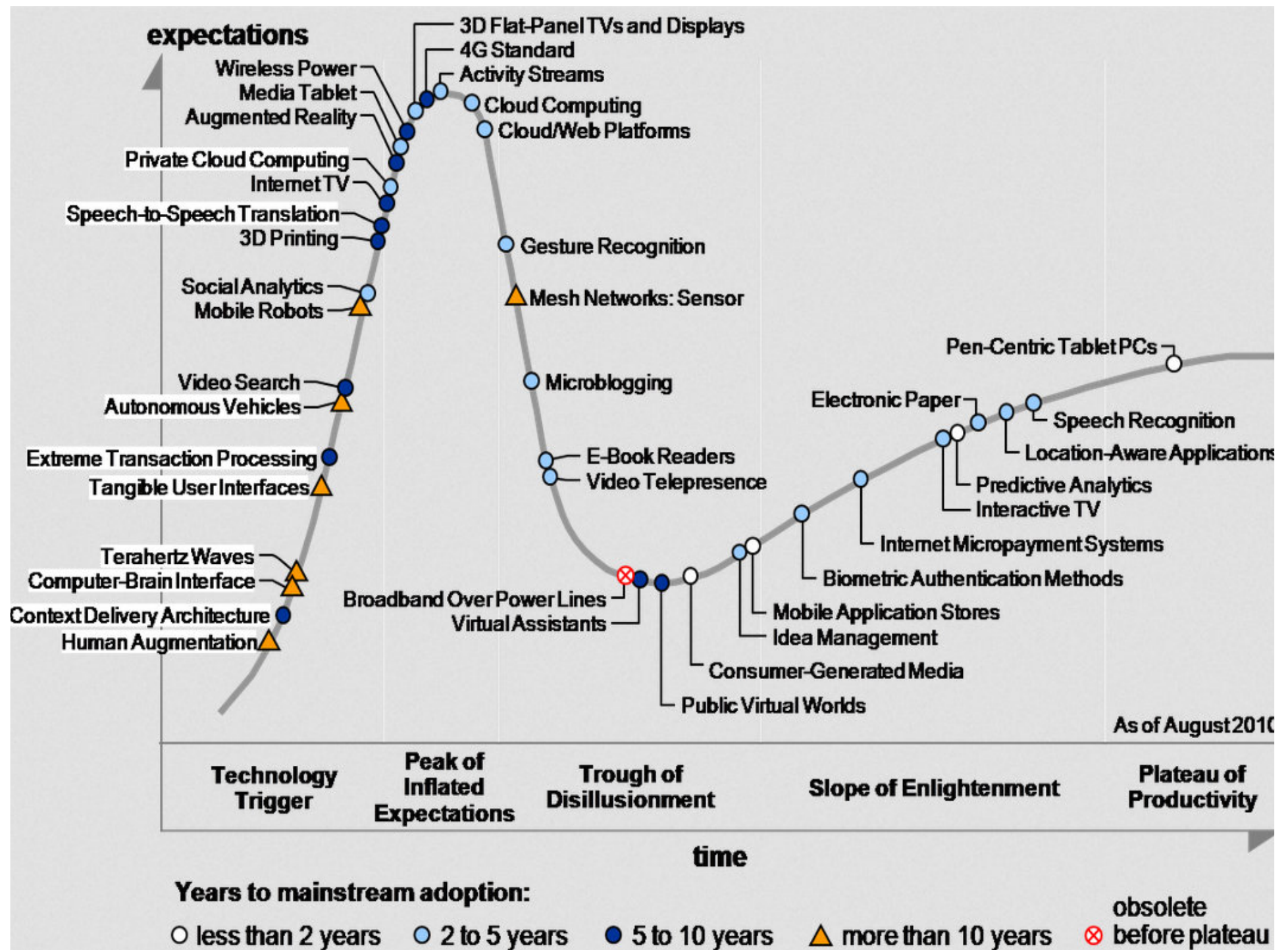


smartFactory^{KL}®



IFS Innovative
Factory Systems

© smartfactory-KL 2014-30





Peter Seeberg
Market Segment Manager,
Factory Automation

Softing Industrial Automation GmbH
<http://industrial.softing.com>